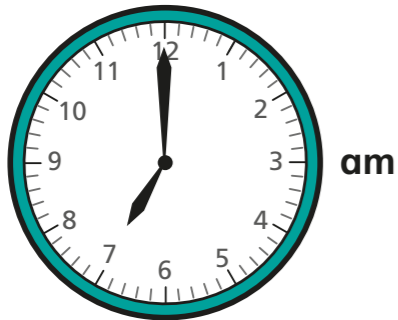


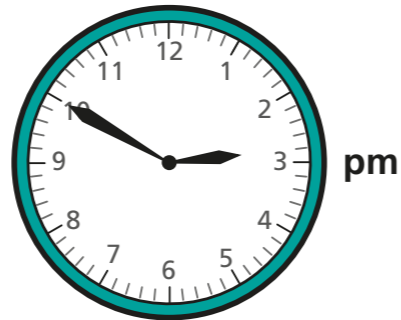
Analogue to digital – 12 hour

1 Is the time shown on the clock in the morning or the afternoon?
Sort the clocks into the table.

Clock A



Clock D



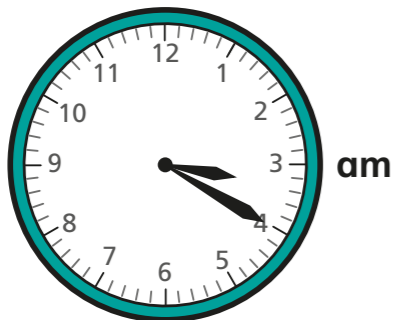
Clock B



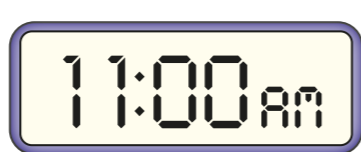
Clock E



Clock C



Clock F

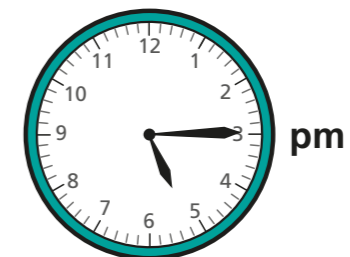


Morning	Afternoon

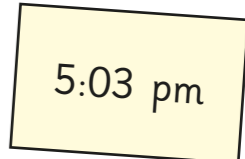
2 Complete the table by drawing hands on the analogue clock or writing the 12-hour digital time.

Analogue	Digital

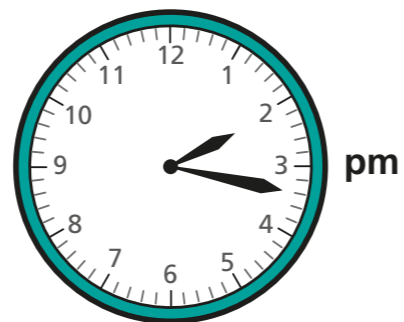
3



Ron is writing the time in 12-hour digital format.
What mistake has Ron made?



- 4 Esther leaves her house at this time.



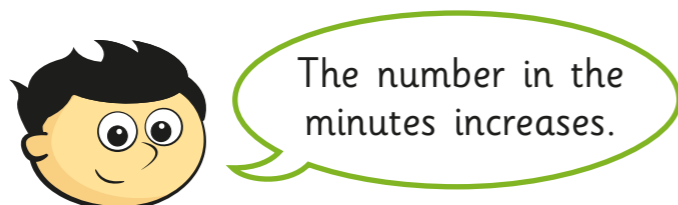
It takes her 1 hour and 45 minutes to get to her friend's house.

Write the time she arrives in 12-hour digital format.

:

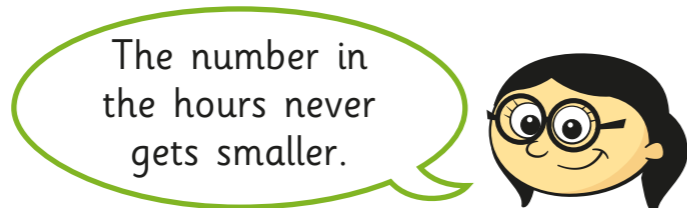
- 5 Jack and Annie are looking at what happens when you add 50 minutes to a time in the 12-hour digital format.

a)



Is Jack's statement always, sometimes or never true?

b)

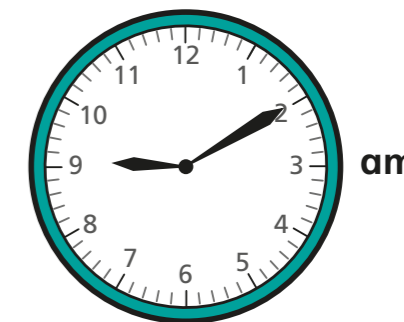


Is Annie's statement always, sometimes or never true?

Compare answers with a partner.



- 6 Huan is getting the bus into town. Buses start running at 6:30 am. They arrive every 22 minutes. Huan is ready to leave at the time shown on the clock. When will the next bus arrive?



- 7 Using the digit cards once only each time, show six different times that could be shown on a 12-hour digital clock.

You do not need to use all the cards every time.



<div style="border: 1px solid black; padding: 5px; display: inline-block;"> : </div>	<div style="border: 1px solid black; padding: 5px; display: inline-block;"> : </div>
<div style="border: 1px solid black; padding: 5px; display: inline-block;"> : </div>	<div style="border: 1px solid black; padding: 5px; display: inline-block;"> : </div>
<div style="border: 1px solid black; padding: 5px; display: inline-block;"> : </div>	<div style="border: 1px solid black; padding: 5px; display: inline-block;"> : </div>

Are there any other possible answers?

